



ST58SE 108

STRATA SURVEYS LTD., Telephone: 0606 834637 Fax: 0606 836657					Borehole Number : 0 Sheet 1 of 2.							
Job Number : 6661/2 Location : Severnside works tip.(79293) Client : ICI Ltd.			Dia. & Drilling Methods light cable percussion 150mm diameter									
Description of Strata	Red. Level	Legend	Thick-ness	Depth m	Sample Depths	Sample Types	N Value	Cu	Ø	Water Level	Piezo-meter	Daily Prog.
MADE GROUND. (Brick rubble.)			(0.50)	0.00								+0.30 4L
MADE GROUND. (Firm grey brown clay.)			(0.20)	0.50								CONCRETE 0.50m
Firm to stiff brown CLAY.			(1.00)	0.70	0.80 - 1.25	U 1						
Firm brown blue/grey with brown mottles CLAY.			(0.80)	1.40	1.40 - 1.70	D 1						
Firm brown blue/grey with brown mottles CLAY.			(0.80)	1.70	1.80 - 2.25	U 2						
Soft blue/grey slightly peaty CLAY, with small pockets and bands of fibrous peat.			(2.20)	2.40	2.40 - 2.80	D 2				V TSI RHT		
Soft blue/grey slightly peaty CLAY, with small pockets and bands of fibrous peat.			(2.20)	2.80	2.80 - 3.40	U 3				V TSI		GRout
Soft blue/grey slightly peaty CLAY, with small pockets and bands of fibrous peat.			(2.20)	3.40	3.40 - 3.80	D 3						
Soft blue/grey slightly peaty CLAY, with small pockets and bands of fibrous peat.			(2.20)	3.80	3.80 - 4.40	U 4						
Soft blue/grey slightly peaty CLAY, with small pockets and bands of fibrous peat.			(2.20)	4.40	4.40 - 4.70	D 4						4.20m
Loose grey silty and slightly clayey fine grained SAND, with occasional small fibrous peaty pockets.			(3.80)	4.70	4.70 - 4.80	W 1				V SLOW		4.70m
Loose grey silty and slightly clayey fine grained SAND, with occasional small fibrous peaty pockets.			(3.80)	4.80	4.80 - 5.40	U 5						
Loose grey silty and slightly clayey fine grained SAND, with occasional small fibrous peaty pockets.			(3.80)	5.40	5.40 - 5.80	D 5						GRANUL FILTER
Loose grey silty and slightly clayey fine grained SAND, with occasional small fibrous peaty pockets.			(3.80)	5.80	5.80 - 6.20	B 1						
Loose grey silty and slightly clayey fine grained SAND, with occasional small fibrous peaty pockets.			(3.80)	6.20	6.20 - 6.80	D 6						STOPPED PIPE
Loose grey silty and slightly clayey fine grained SAND, with occasional small fibrous peaty pockets.			(3.80)	6.80	6.80 - 7.40	U 6						
Loose grey silty and slightly clayey fine grained SAND, with occasional small fibrous peaty pockets.			(3.80)	7.40	7.40 - 7.80	D 7						
Loose grey silty and slightly clayey fine grained SAND, with occasional small fibrous peaty pockets.			(3.80)	7.80	7.80 - 8.40	U 7						
Loose grey silty and slightly clayey fine grained SAND, with occasional small fibrous peaty pockets.			(3.80)	8.40	8.40 - 8.60	D 8						8.45m
Soft grey very sandy and silty CLAY.			(2.00)	8.60	8.60 - 9.05	U 8						8.50m BENT 8.75m
Soft grey very sandy and silty CLAY.			(2.00)	9.20	9.20 - 9.60	D 9						
Soft grey very sandy and silty CLAY.			(2.00)	9.60	9.60 - 10.05	U 9						GRout
Borehole Continued				10.00								

General Remarks :  
Hand dig brick rubble to 0.50m over 1 hour.  
Water struck @ 4.70m rising to 2.08m after 2 Hours (Rising head test.)  
After bailing out borehole TSL. 10 Mins-3.31m, 20 minutes-2.62m.  
Pipe installed @ 8.45m, details included.

Dates : 11-AUG-92

Driller : G.B.

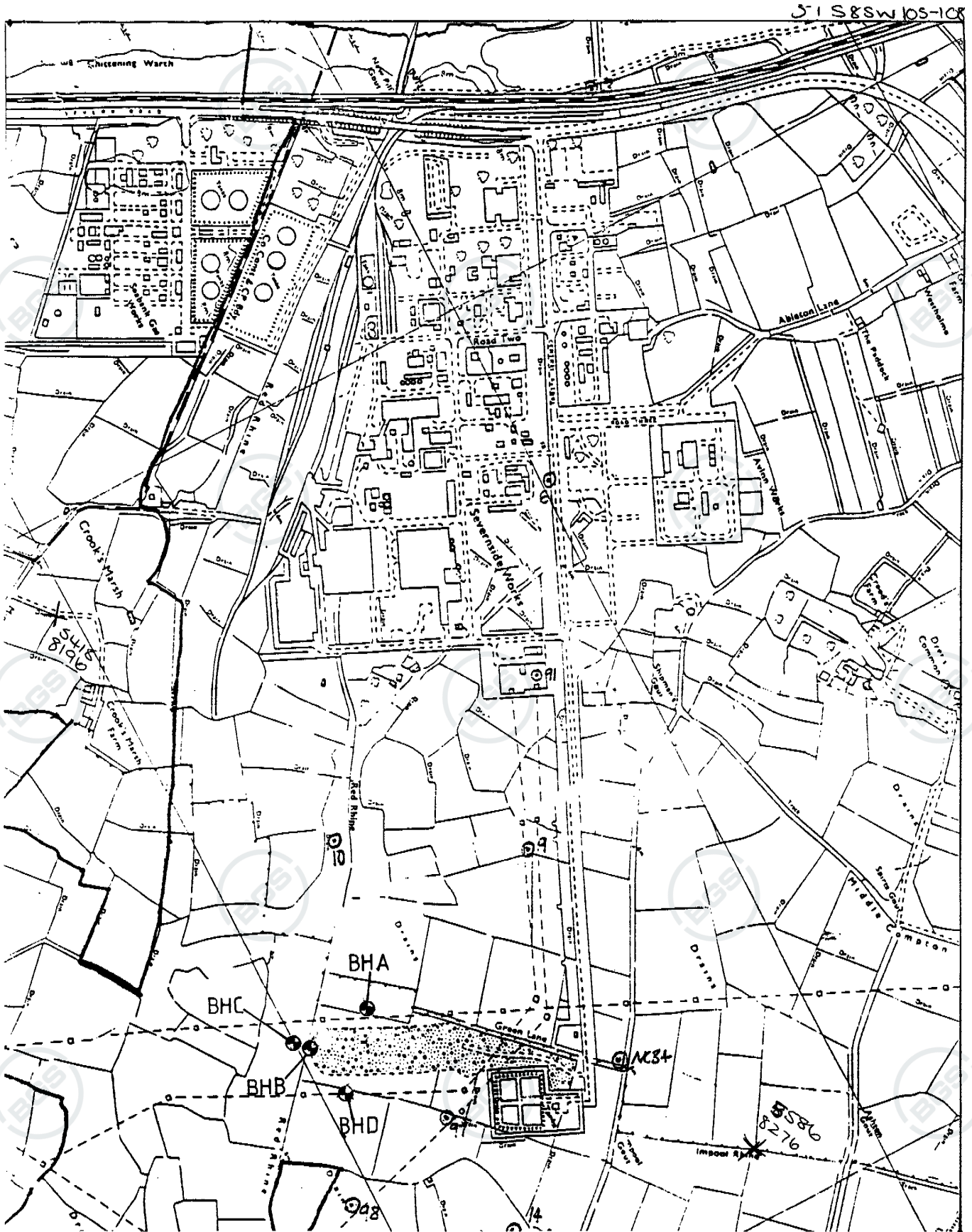
Engineer: A.M.

Coordinates :



ST58SE 108

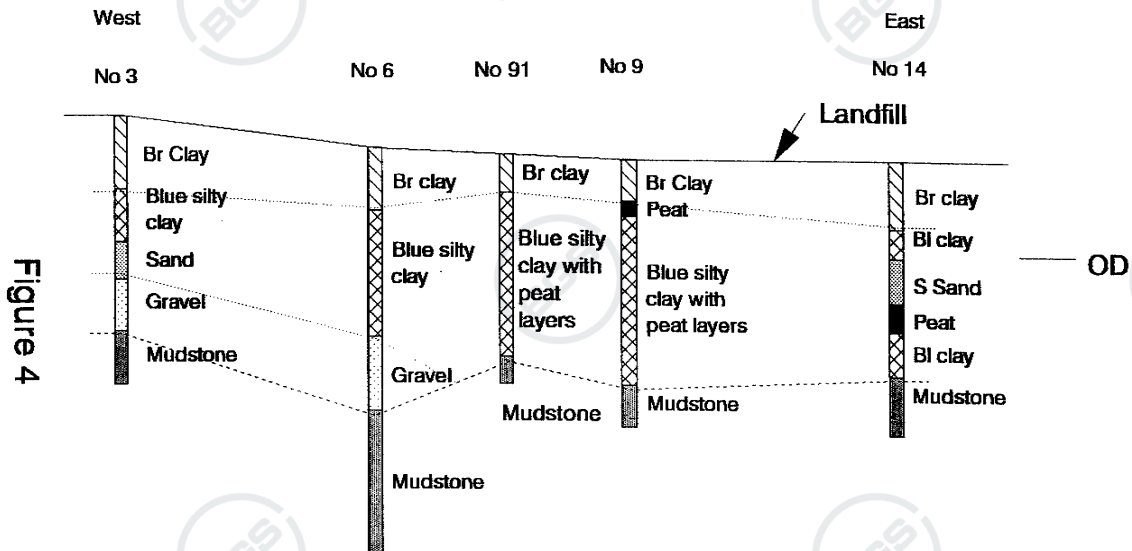
STRATA SURVEYS LTD., Telephone: 0606 834637 Fax: 0606 836657					Borehole Number : D Sheet 2 of 2.							
Job Number : 6661/2 Location : Severnside works tip. (79293) Client : ICI Ltd.					Dia. & Drilling Methods light cable percussion 150mm diameter							
Description of Strata	Red. Level	Legend	Thick-ness	Depth m	Sample Depths	Sample Types	N Value	Cu	Ø	Water Level	Piezo-meter	Daily Prog.
Soft grey very sandy and silty CLAY.		x x x	(2.00)	10.00	9.60 - 10.05	U <sub>A</sub> 9					C-C	GR01
Borehole Completed				10.50	10.50	D 10					C-C	11/8
General Remarks : Hand dig brick rubble to 0.50m over 1 hour. Water struck @ 4.70m rising to 2.08m after 2 Hours (Rising head test.) After bailing out borehole TSL. 10 Mins-3.31m, 20 minutes-2.62m. Pipe installed @ 8.45m, details included.						Dates : 11-AUG-92 Driller : G.B. Engineer: A.M. Coordinates :						



2.2 SITE PLAN  
SCALE APPROX 1:1000

STRATA SURVEYS LTD.,	
Telephone: 0606 834637 Fax: 0606 836657	
Job Number : 6661/2	Location : Severnside works tip.(79293)
Client : ICI Ltd.	

### ICI Severnside Site Section along Central Avenue



ST58SE 108-108

ST58 SE 10S-108

# ICI Severnside Site

## Geology of landfill site

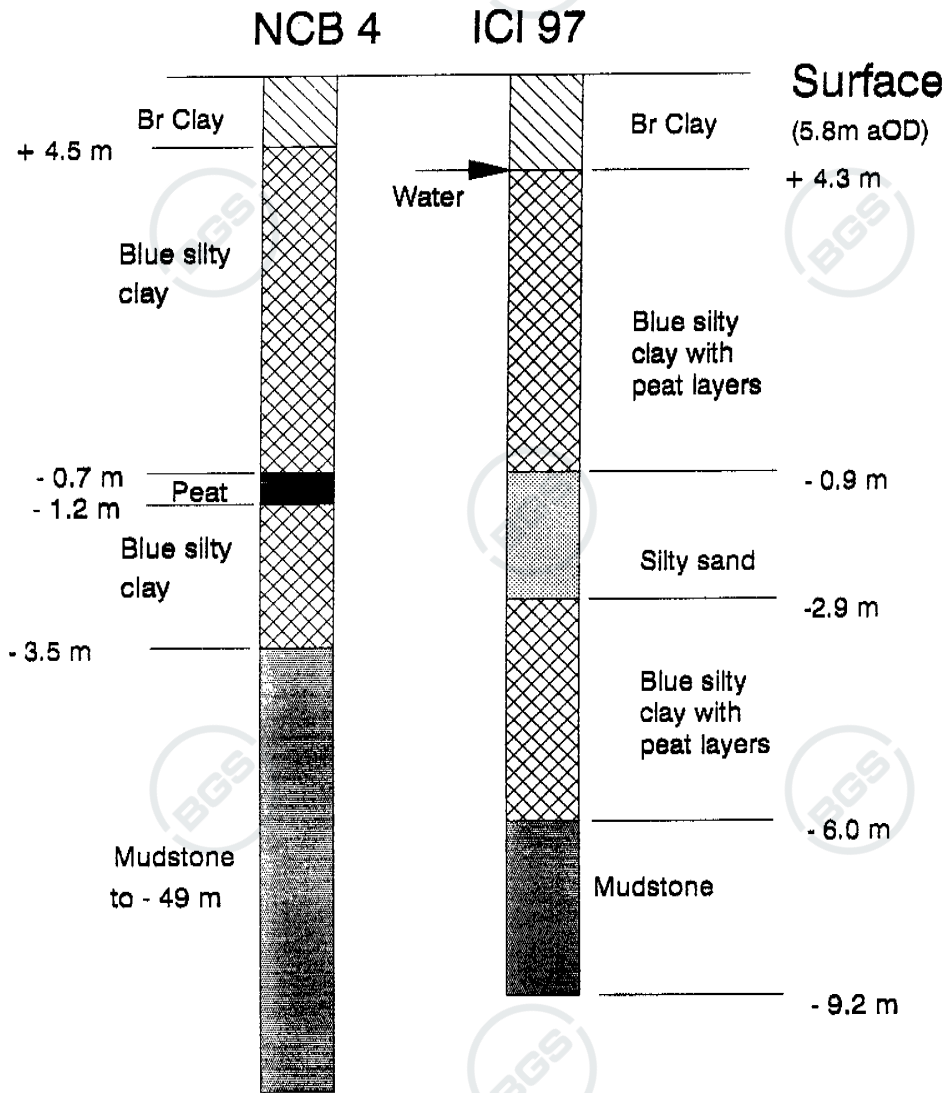


Figure 6